



NHS

MDS/AML & ALL SUPPORT GROUP

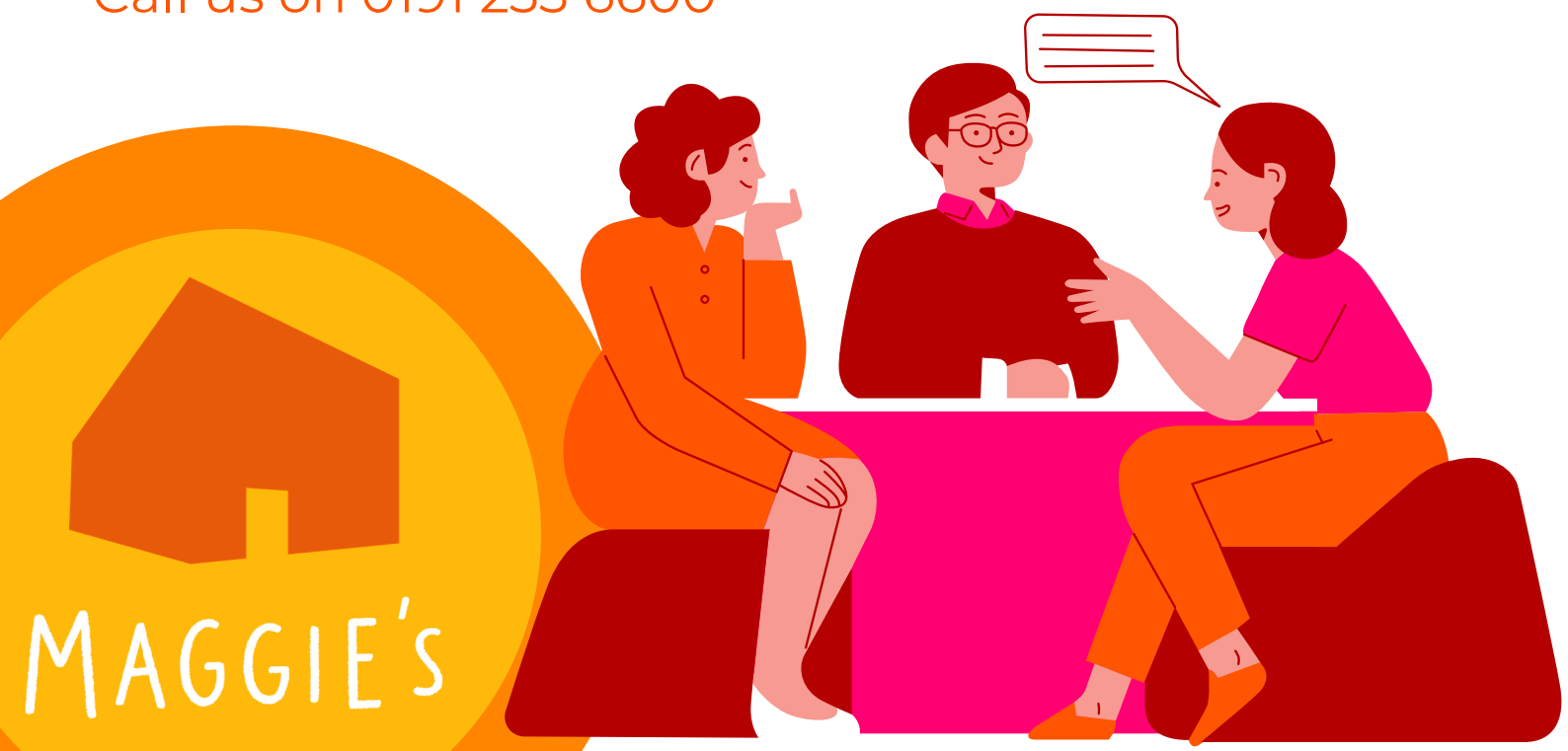
This facilitated support group will take place in Maggie's on March 2nd, June 1st, September 7th and December 7th in 2026.

The group offers a space to chat and share with healthcare professionals and others facing similar challenges as yourself.

To register your interest, contact:

Email newcastle@maggies.org

Call us on 0191 233 6600



MAGGIE'S NEWCASTLE

AT THE FREEMAN HOSPITAL

Maggie's is for anyone affected by cancer, including family and friends. You can come into our beautiful centre for a cup of tea, find a peaceful spot in our gardens, or speak with our team of experts.

Our cancer support specialists offer a daily drop-in. You don't need an appointment or referral, you can just call in anytime Monday to Friday, 9am-5pm.

"There's a special feeling you get when you walk through the door at Maggie's. Even though I was just over the road, I felt a million miles away from the hospital."

Centre Visitor, Maggie's Newcastle

